

Waterproof carport system



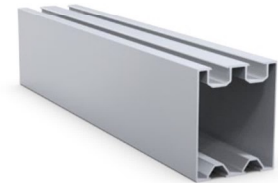
Component List



R125



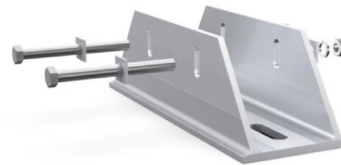
CPS



B110



CPH-01



CPS-02

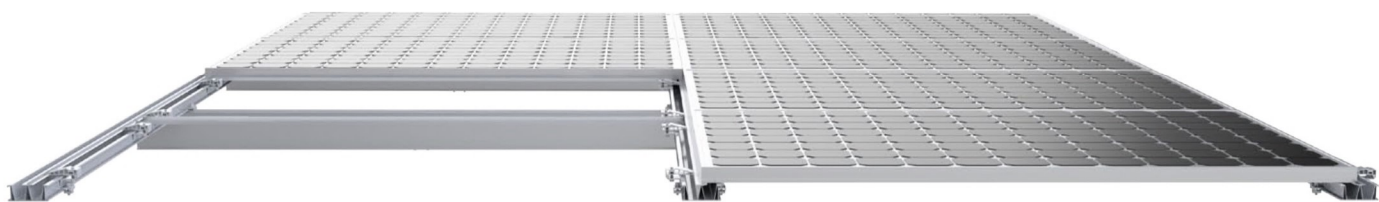
Our carport system are sold to Africa, The Middle East, Southeast Asia, Europe and the South America. The idle area of the parking shed is used to build a photovoltaic parking shed, and the combination of photovoltaic power generation and carport is the simplest one in the combination of photovoltaic and building. It can not only achieve all the functions of the traditional carport, but also bring electricity generation benefits to the owner. It is stored in the battery by the charging device or directly supplied to the electric vehicle to charge for self-use.

You can even use extra power to get online. Using aluminum alloy structure bracket, simple installation, generous, fashionable, beautiful.

Product Overview:

Install Site	Flat outdoor
Material	AL6005-T5, SUS304
Standards	AS/NZ1170.2、JIS C 8955、MCS 012、TUV、UL2703 etc
Tilt Angle	5°~30°

Waterproof carport system



Features:

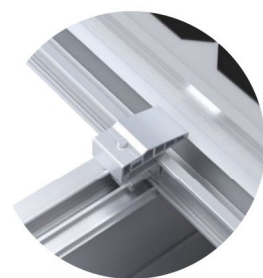
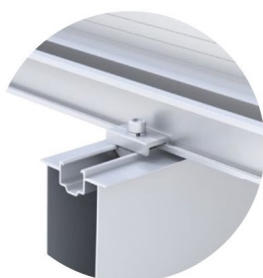
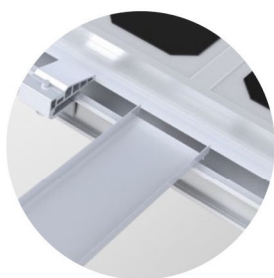
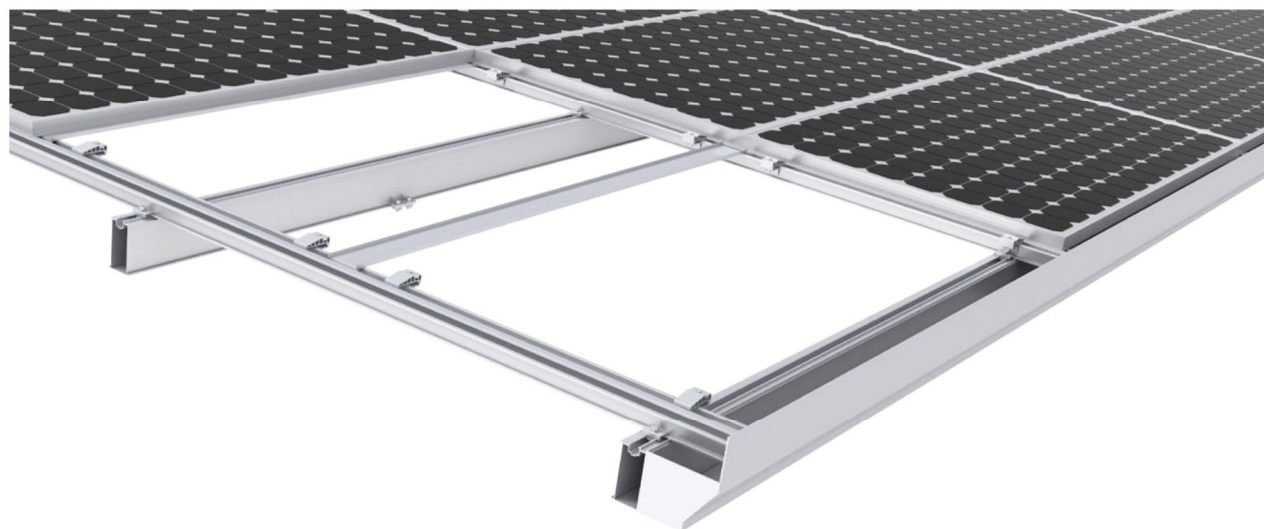
1. Good heat absorption.
2. Good waterproof and rain protection, convenient installation, and flexibility.
3. Make full use of the original site to provide green energy.
4. Suitable for frame panel: Poly modules, double glass module etc.

Installation place: home, company, shopping mall, large parking lot.

Parking category: battery car/bicycle, car, bus.

Number of parking Spaces: 1 parking space, 2 parking Spaces, 3 parking Spaces, multiple parking Spaces (large span).

By row: single row parking space, double row parking space.



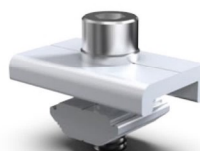
Component List



HWT



RWT



GRC



PVC